




Primary 4 - Term 4 Science (Nan Hua)

-  Duplicate
-  Print
-  Delete

 Assign Test

Test Introduction

[+ Add Introduction](#)

65 Questions (74 Points)

Question Bank: 19,950 Questions 

- Test Questions
- 1 Test Assignment**

Question 1

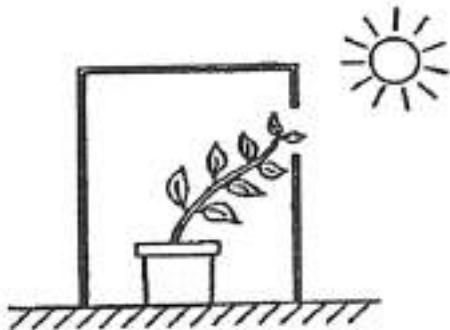
Primary 4 Science » Primary 4 Science (Term 4)

2 pts

Booklet A (28 x 2 marks)

For each question from 1 to 28, four options are given. One of them is the correct answer.

The plant grows towards the opening of the box where light is able to enter.



This shows that the plant is a living thing because it can _____

- A) grow
- B) breathe
- C) respond
- D) reproduce

Question Type: Multiple Choice
 Randomize Answers: No
 Date Added: Fri 15th Jan 2021
 Last Modified: N/A
 QID#: 25,890,631

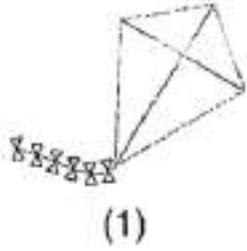
Question 2

Primary 4 Science » Primary 4 Science (Term 4)

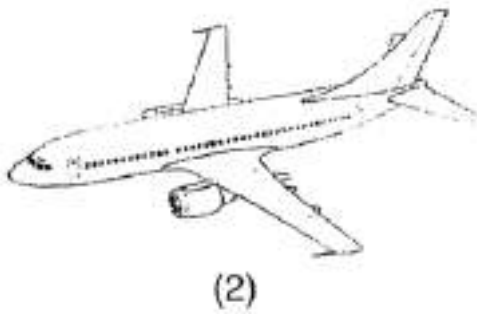
2 pts

Which one of the following is a living thing?

A)



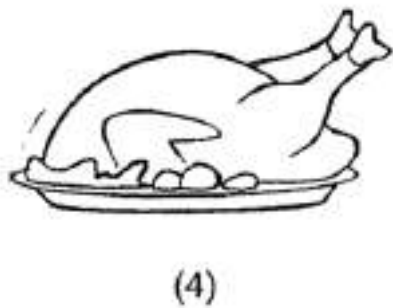
B)



✓ C)



D)



Question Type: Multiple Choice
Randomize Answers: No
Date Added: Fri 15th Jan 2021
Last Modified: N/A
QID#: 25,890,647

[Answers](#) | [Edit](#) | [Duplicate](#) | [Used In](#) | [Reorder](#)

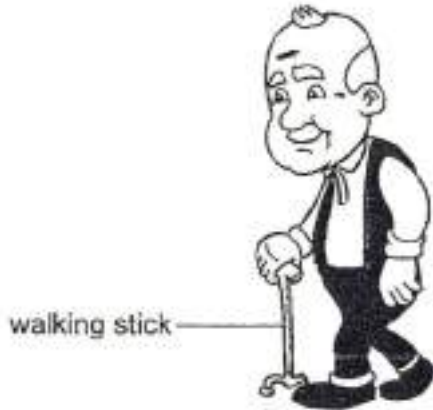
[Remove From Test](#)

Question 3

Primary 4 Science » Primary 4 Science (Term 4)

2 pts

The diagram below shows an old man with a walking stick.



Iron is used to make the walking stick because iron _____.

- A) is shiny
- ✓ B) is strong
- C) sinks in water
- D) conducts heat well

Question Type: Multiple Choice
Randomize Answers: No
Date Added: Fri 15th Jan 2021
Last Modified: N/A
QID#: 25,890,738

[Answers](#) | [Edit](#) | [Duplicate](#) | [Used In](#) | [Reorder](#)

[Remove From Test](#)

Question 4

Primary 4 Science » Primary 4 Science (Term 4)

2 pts

Which one of the following is the function of the roots of a plant?

- A) makes food
- ✓ B) takes in mineral salts
- C) holds the plant upright
- D) helps in gaseous exchange

Question Type: Multiple Choice
Randomize Answers: No

Date Added: Fri 15th Jan 2021
Last Modified: N/A
QID#: 25,890,743

[Answers](#) | [Edit](#) | [Duplicate](#) | [Used In](#) | [Reorder](#)

[Remove From Test](#)

Question 5

Primary 4 Science » Primary 4 Science (Term 4)

2 pts

In which part of the digestive system is water removed from food?

- A) gullet
- B) stomach
- C) small intestine
- ✓ D) large intestine

Question Type: Multiple Choice
Randomize Answers: No
Date Added: Fri 15th Jan 2021
Last Modified: N/A
QID#: 25,890,750

[Answers](#) | [Edit](#) | [Duplicate](#) | [Used In](#) | [Reorder](#)

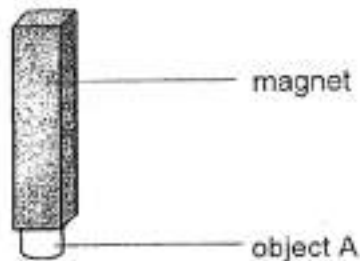
[Remove From Test](#)

Question 6

Primary 4 Science » Primary 4 Science (Term 4)

2 pts

Object A was attracted to a magnet as shown in the diagram below.



Object A is made of _____

- ✓ A) iron
- B) plastic
- C) rubber
- D) ceramic

Question Type: Multiple Choice
Randomize Answers: No
Date Added: Fri 15th Jan 2021
Last Modified: N/A
QID#: 25,892,589

[Answers](#) | [Edit](#) | [Duplicate](#) | [Used In](#) | [Reorder](#)

[Remove From Test](#)

Question 7

Primary 4 Science » Primary 4 Science (Term 4)

2 pts

Which one of the following is a source of light?

✓ A)

Lighted candle

B)

Moon

C)

Battery

D)

Mirror

Question Type: Multiple Choice
Randomize Answers: No
Date Added: Fri 15th Jan 2021
Last Modified: N/A
QID#: 25,892,604

[Answers](#) | [Edit](#) | [Duplicate](#) | [Used In](#) | [Reorder](#)

[Remove From Test](#)

Question 8

Primary 4 Science » Primary 4 Science (Term 4)

2 pts

Kim boiled some water in the kettle shown below.



She is able to hold the kettle of boiling water using the wooden handle.
This is because wood is a _____.

- A) light material
- B) flexible material
- ✓ C) poor conductor of heat
- D) good conductor of heat

Question Type: Multiple Choice
Randomize Answers: No
Date Added: Fri 15th Jan 2021
Last Modified: N/A
QID#: 25,892,717

[Answers](#) | [Edit](#) | [Duplicate](#) | [Used In](#) | [Reorder](#)

[Remove From Test](#)

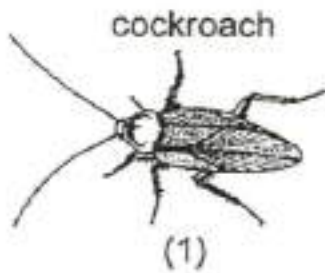
Question 9

Primary 4 Science » Primary 4 Science (Term 4)

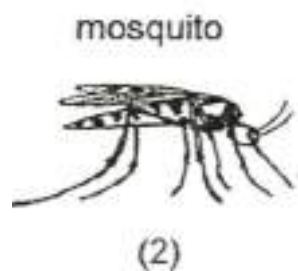
2 pts

Which of the animal has a 4 stage life cycle?

A)



✓ B)



C)

frog



(3)

D)

chicken



(4)

Question Type: Multiple Choice
Randomize Answers: No
Date Added: Fri 15th Jan 2021
Last Modified: N/A
QID#: 25,892,733

[Answers](#) | [Edit](#) | [Duplicate](#) | [Used In](#) | [Reorder](#)

[Remove From Test](#)

Question 10

Primary 4 Science » Primary 4 Science (Term 4)

2 pts

Matter is anything that has mass and occupies space. Which one of the following is not a matter?

- A) ice
- B) tree
- C) water
- ✓ D) sunlight

Question Type: Multiple Choice
Randomize Answers: No
Date Added: Fri 15th Jan 2021
Last Modified: N/A
QID#: 25,892,741

[Answers](#) | [Edit](#) | [Duplicate](#) | [Used In](#) | [Reorder](#)

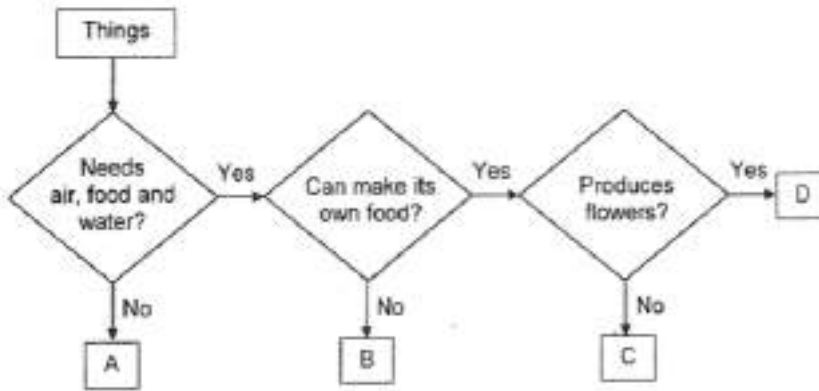
[Remove From Test](#)

Question 11

Primary 4 Science » Primary 4 Science (Term 4)

2 pts

Study the flowchart below.



Plant



Chicken

Which of the following letters best represent the plant and the chicken shown above?

	Plant	Chicken
(1)	A	B
(2)	D	B
(3)	C	A
(4)	D	C

- A) 1
 ✓ B) 2
 C) 3
 D) 4

Question Type: Multiple Choice
Randomize Answers: No
Date Added: Fri 15th Jan 2021
Last Modified: N/A
QID#: 25,892,747

[Answers](#) | [Edit](#) | [Duplicate](#) | [Used In](#) | [Reorder](#)

[Remove From Test](#)

Question 12

Primary 4 Science » Primary 4 Science (Term 4)

2 pts

Some students found Animal X in the soil of their school garden as shown below.



After making some observations about Animal X, the students concluded that Animal X belongs to the insect group.

Which one of the following observations shows that Animal X is an insect?

- A) It is hairy
- ✓ B) It has six legs
- C) It has no wings
- D) It has many body parts

Question Type: Multiple Choice
Randomize Answers: No
Date Added: Fri 15th Jan 2021
Last Modified: N/A
QID#: 25,892,818

[Answers](#) | [Edit](#) | [Duplicate](#) | [Used In](#) | [Reorder](#)

[Remove From Test](#)

Question 13

Primary 4 Science » Primary 4 Science (Term 4)

2 pts

P, Q, R and S are four different materials. A tick (✓) shows the property of the material.

	P	Q	R	S
fragile	✓			
strong		✓	✓	✓
flexible	✓		✓	✓
waterproof	✓	✓		✓

Which material, P, Q, R or S, is most suitable to make a tent as shown below?



- A) P
- B) Q
- C) R

✓ D) S

Question Type: Multiple Choice
 Randomize Answers: No
 Date Added: Fri 15th Jan 2021
 Last Modified: N/A
 QID#: 25,892,839

Answers | Edit | Duplicate | Used In | Reorder

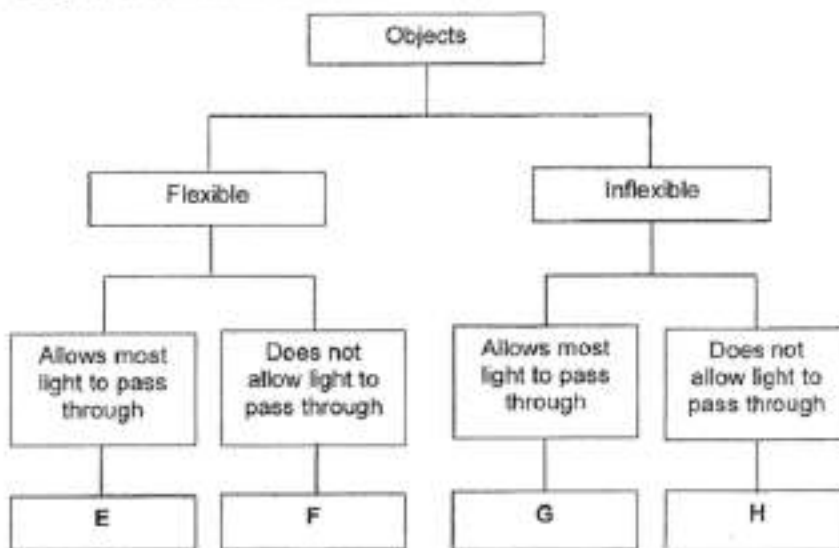
Remove From Test

Question 14

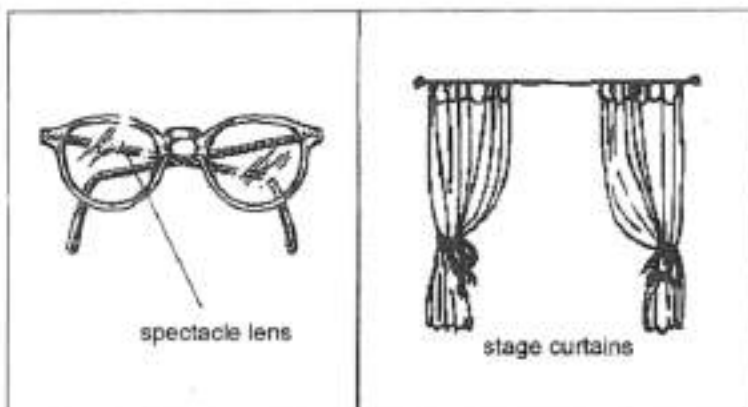
Primary 4 Science » Primary 4 Science (Term 4)

2 pts

Study the classification chart below carefully.



In which groups, E, F, G or H, should the spectacle lens and stage curtains be placed?



	Spectacle lens	Stage curtains
(1)	G	H
(2)	G	F
(3)	E	F
(4)	E	G

A) 1

✓ B) 2

C) 3

D) 4

Question Type: Multiple Choice
Randomize Answers: No
Date Added: Fri 15th Jan 2021
Last Modified: N/A
QID#: 25,892,850

[Answers](#) | [Edit](#) | [Duplicate](#) | [Used In](#) | [Reorder](#)

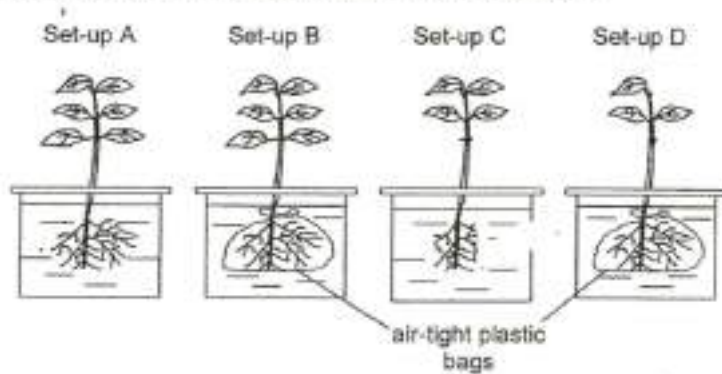
[Remove From Test](#)

Question 15

Primary 4 Science » Primary 4 Science (Term 4)

2 pts

Devi wanted to find out if a plant takes in water through their roots. She prepared the following set-ups and placed them near an open window.



The roots of the plants in set-up B and set-up D were tied with air-tight plastic bags at the start of the experiment before putting the plants into the beaker of water. Each set-up had the same amount of water.

Which two set-ups should she use to conduct a fair test?

- ✓ A) A and B
- B) A and C
- C) B and C
- D) B and D

Question Type: Multiple Choice
Randomize Answers: No
Date Added: Fri 15th Jan 2021
Last Modified: N/A
QID#: 25,892,871

[Answers](#) | [Edit](#) | [Duplicate](#) | [Used In](#) | [Reorder](#)

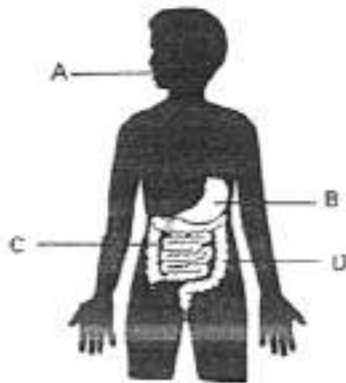
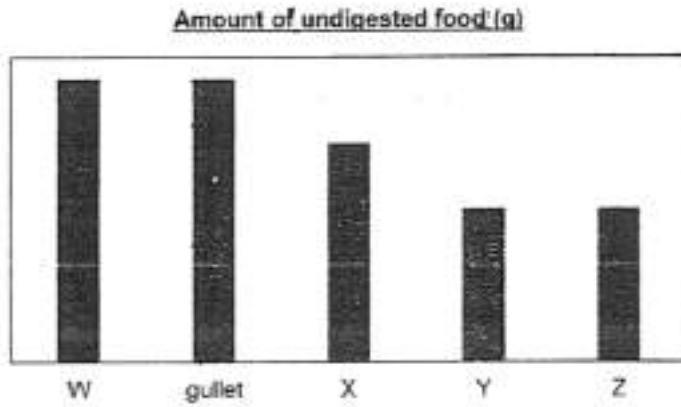
[Remove From Test](#)

Question 16

Primary 4 Science » Primary 4 Science (Term 4)

2 pts

The bar graph below shows the amount of undigested food as it leaves each organ of the human digestive system.



Which one of the following parts identifies part W in the graph above?

- ✓ A) A
- B) B
- C) C
- D) D

Question Type: Multiple Choice
Randomize Answers: No
Date Added: Fri 15th Jan 2021
Last Modified: N/A
QID#: 25,892,878

[Answers](#) | [Edit](#) | [Duplicate](#) | [Used In](#) | [Reorder](#)

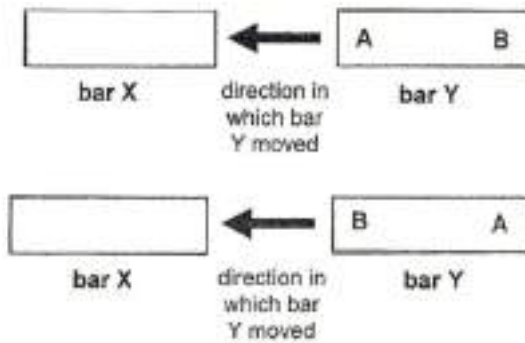
[Remove From Test](#)

Question 17

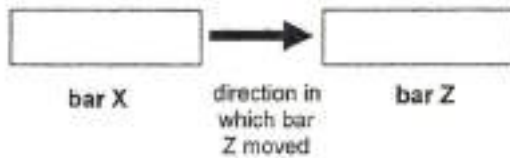
Primary 4 Science » Primary 4 Science (Term 4)

2 pts

Shaun wanted to find out the magnetic properties of three metal bars, X, Y and Z. He placed one end of bar X to poles A and B of bar Y, one at a time. He observed that bar Y moved towards bar X.



Shaun placed one end of bar X next to one end of bar Z. She observed that bar Z moved away from bar X.



Based on the information above, which of the following conclusions that Shaun made were correct?

- A Bar Y is a magnetic material.
- B Only bars X and Z are magnets.
- C Bar X will repel both ends of bar Y.
- D Bar Z will repel both ends of bar Y.

- ✓ A) A and B only
- B) A and C only
- C) A, B and C only
- D) B, C and D only

Question Type: Multiple Choice
 Randomize Answers: No
 Date Added: Fri 15th Jan 2021
 Last Modified: N/A
 QID#: 25,892,888

[Answers](#) | [Edit](#) | [Duplicate](#) | [Used In](#) | [Reorder](#)

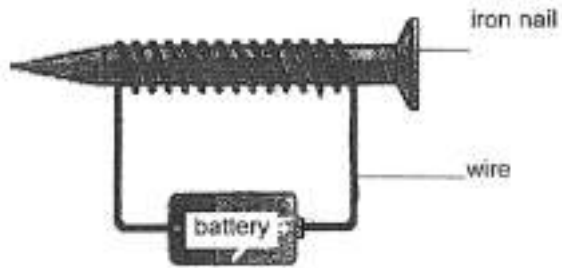
[Remove From Test](#)

Question 18

Primary 4 Science » Primary 4 Science (Term 4)

2 pts

Using the set-up shown below, Ken wanted to find out if the number of batteries affects the strength of an electromagnet.



Which of the following variable(s) should Ken keep the same to ensure a fair test?

- A material of nail used
- B thickness of wire used
- C number of batteries used
- D number of coils around the nail

- A) C only
- ✓ B) A, B and D only
- C) A, C and D only
- D) A, B, C and D

Question Type: Multiple Choice
Randomize Answers: No
Date Added: Fri 15th Jan 2021
Last Modified: N/A
QID#: 25,892,894

[Answers](#) | [Edit](#) | [Duplicate](#) | [Used In](#) | [Reorder](#)

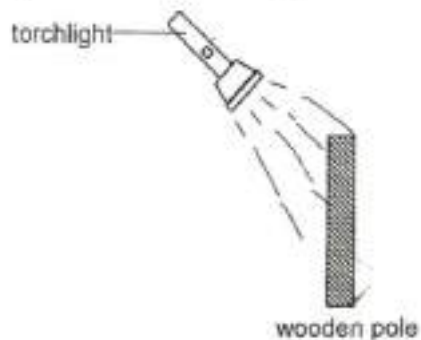
[Remove From Test](#)

Question 19

Primary 4 Science » Primary 4 Science (Term 4)

2 pts

Yong Kang conducted an experiment in a dark room. He shone a torchlight at a wooden pole as shown in the diagram below.



Which one of the following is the shadow that Yong Kang would observe?

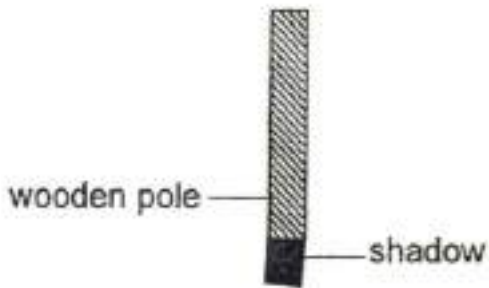
✓ A)



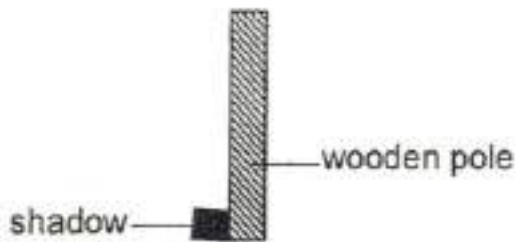
B)



C)



D)



Question Type: Multiple Choice
Randomize Answers: No
Date Added: Fri 15th Jan 2021
Last Modified: N/A
QID#: 25,892,908

[Answers](#) | [Edit](#) | [Duplicate](#) | [Used In](#) | [Reorder](#)

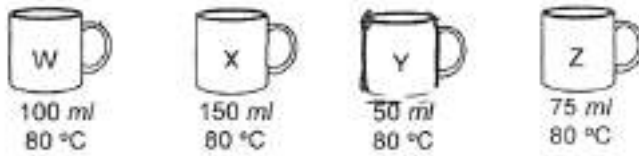
[Remove From Test](#)

Question 20

Primary 4 Science » Primary 4 Science (Term 4)

2 pts

Four identical cups, W, X, Y and Z, were filled with different amount of coffee and placed on a table in the classroom as shown below.



Which cup of coffee will cool to room temperature first?

- A) W
- B) X
- ✓ C) Y
- D) Z

Question Type: Multiple Choice
Randomize Answers: No
Date Added: Fri 15th Jan 2021
Last Modified: N/A
QID#: 25,892,918

[Answers](#) | [Edit](#) | [Duplicate](#) | [Used In](#) | [Reorder](#)

[Remove From Test](#)

Question 21

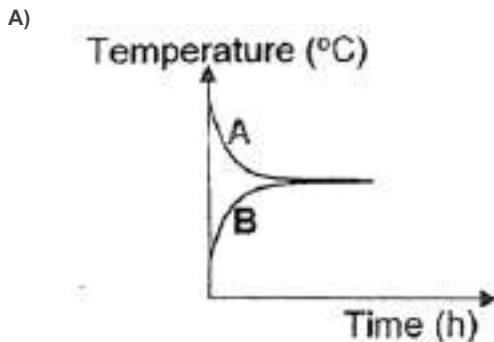
Primary 4 Science » Primary 4 Science (Term 4)

2 pts

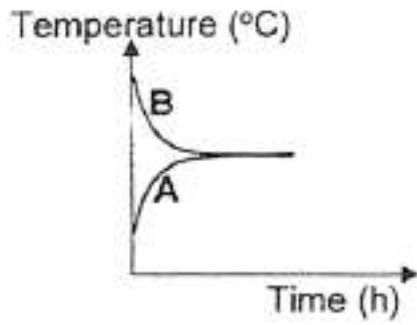
Mrs Ho brought two identical boxes, A and B, to a class party as shown below.



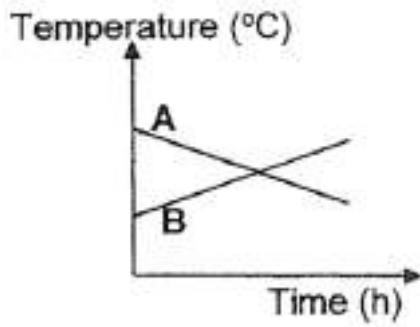
Based on the above set-ups, which of the following graph correctly show the change in temperature of the items inside the two boxes after 2 hours?



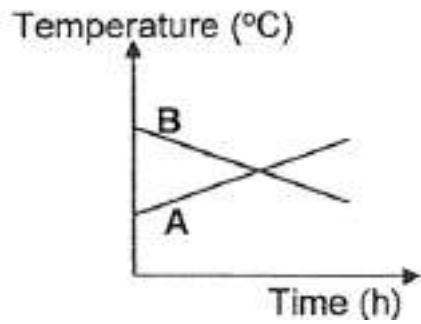
- ✓ B)



c)



D)



Question Type: Multiple Choice
Randomize Answers: No
Date Added: Fri 15th Jan 2021
Last Modified: N/A
QID#: 25,892,930

[Answers](#) | [Edit](#) | [Duplicate](#) | [Used In](#) | [Reorder](#)

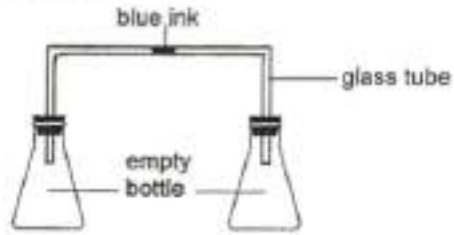
[Remove From Test](#)

Question 22

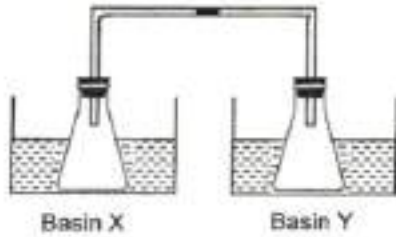
Primary 4 Science » Primary 4 Science (Term 4)

2 pts

Danny connected two identical bottles with a glass tube. The glass tube contains a drop of blue ink as shown below.



The two bottles were placed into Basin X and Basin Y as shown below. Basin X and Basin Y have the same amount of water at different temperature.



Which of the following is correct?

	Temperature of water in Basin X	Temperature of water in Basin Y	Direction of the movement of the ink
(1)	90 °C	10 °C	→
(2)	90 °C	10 °C	←
(3)	40 °C	20 °C	←
(4)	10 °C	40 °C	→

- ✓ A) 1
B) 2
C) 3
D) 4

Question Type: Multiple Choice
Randomize Answers: No
Date Added: Fri 15th Jan 2021
Last Modified: N/A
QID#: 25,892,940

[Answers](#) | [Edit](#) | [Duplicate](#) | [Used In](#) | [Reorder](#)

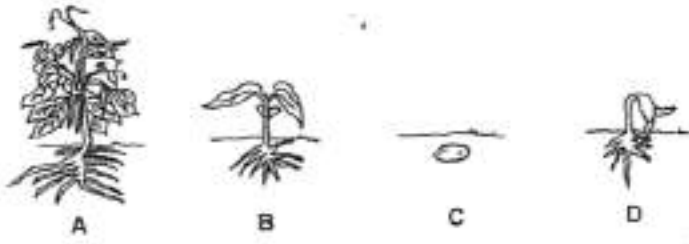
[Remove From Test](#)

Question 23

Primary 4 Science » Primary 4 Science (Term 4)

2 pts

The diagram below shows the different stages in the life cycle of a plant.



Arrange the stages in the correct order to show the life cycle of a plant.

- (1) A → B → D → C
 (2) B → D → C → A
 (3) C → D → B → A
 (4) D → C → A → B

- A) 1
 B) 2
 ✓ C) 3
 D) 4

Question Type: Multiple Choice
Randomize Answers: No
Date Added: Fri 15th Jan 2021
Last Modified: N/A
QID#: 25,892,944

[Answers](#) | [Edit](#) | [Duplicate](#) | [Used In](#) | [Reorder](#)

[Remove From Test](#)

Question 24

Primary 4 Science » Primary 4 Science (Term 4)

2 pts

The table below shows what a pupil observed about the life cycle of an insect.

Date	Observation
10 March	Eggs were laid.
11 March	Eggs hatched into larvae.
18 March	Some larvae became pupae.
22 March	Some pupae became adults.

Which one of the following statement about the insect is **false**?

- A) The insect lay eggs
 ✓ B) The insect spends most of its life as a pupa
 C) The insect has a similar life cycle as the butterfly
 D) The insect has three body parts and six legs in its adult stage

Question Type: Multiple Choice
Randomize Answers: No
Date Added: Fri 15th Jan 2021
Last Modified: N/A
QID#: 25,892,964

[Answers](#) | [Edit](#) | [Duplicate](#) | [Used In](#) | [Reorder](#)

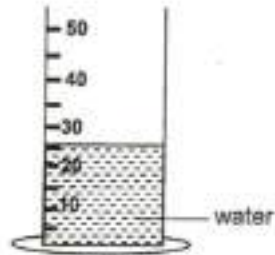
[Remove From Test](#)

Question 25

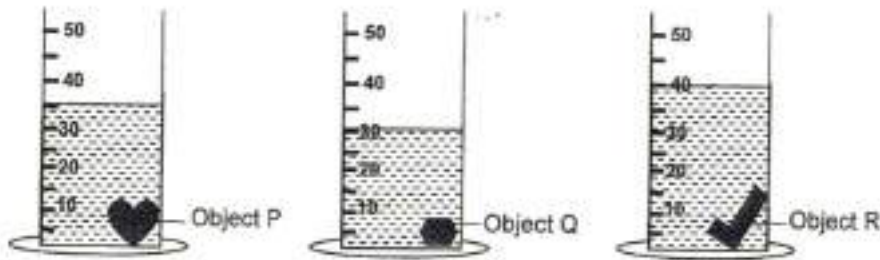
Primary 4 Science » Primary 4 Science (Term 4)

2 pts

Kailing poured 25 ml of water into each of the three containers as shown in the diagram below.



She added one object into each of the three containers as shown below.



Based on the above observation, which of the following conclusion(s) is/are correct?

- A Object R has the largest volume.
- B Object Q and Object R has the same volume.
- C Object P has a greater volume than Object Q.

- A) A only
- ✓ B) A and C only
- C) B and C only
- D) A, B and C

Question Type: Multiple Choice
Randomize Answers: No
Date Added: Fri 15th Jan 2021
Last Modified: N/A
QID#: 25,893,032

[Answers](#) | [Edit](#) | [Duplicate](#) | [Used In](#) | [Reorder](#)

[Remove From Test](#)

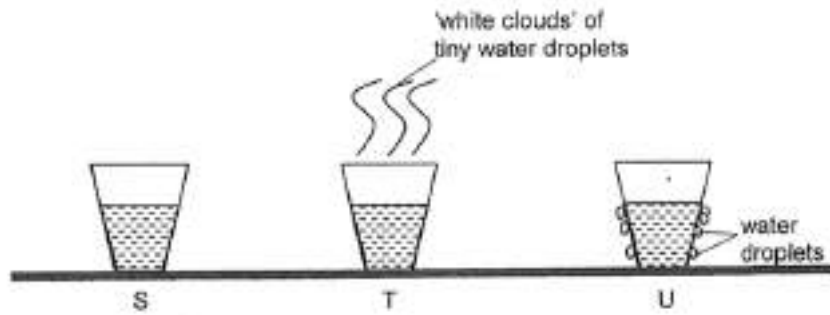
Question 26

Primary 4 Science » Primary 4 Science (Term 4)

2 pts

Carrie poured 100 ml of water at different temperature into three identical cups, S, T and U. She left the three cups of water on the table at room temperature.

The diagram below shows what she observed after 5 minutes.



Arrange the cups according to the temperature of the water in the cups, starting from the highest temperature to the lowest temperature.

- A) U, S, T
- B) S, U, T
- C) S, T, U
- ✓ D) T, S, U

Question Type: Multiple Choice
Randomize Answers: No
Date Added: Fri 15th Jan 2021
Last Modified: N/A
QID#: 25,893,042

[Answers](#) | [Edit](#) | [Duplicate](#) | [Used In](#) | [Reorder](#)

[Remove From Test](#)

Question 27

Primary 4 Science » Primary 4 Science (Term 4)

2 pts

Which of the following is/are way(s) we can conserve water?

- A: Take shorter showers
- B: Collect rain water to wash the corridors
- C: Use a hose to wash the car instead of a pail

- A) B only
- B) C only
- ✓ C) A and B only
- D) A, B and C

Question Type: Multiple Choice
Randomize Answers: No
Date Added: Fri 15th Jan 2021
Last Modified: N/A
QID#: 25,893,055

[Answers](#) | [Edit](#) | [Duplicate](#) | [Used In](#) | [Reorder](#)

[Remove From Test](#)

Question 28

Primary 4 Science » Primary 4 Science (Term 4)

2 pts

Muthu poured the same amount of water into four containers made from the same material. Which container will have the most amount of water left after three hours?

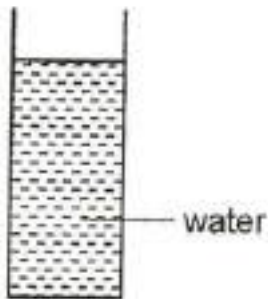
A)



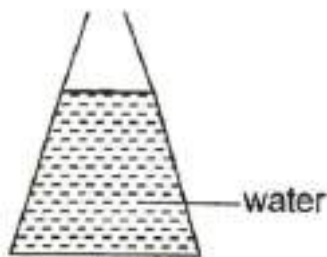
B)



C)



✓ D)



Question Type: Multiple Choice
Randomize Answers: No
Date Added: Fri 15th Jan 2021
Last Modified: N/A
QID#: 25,893,136

[Answers](#) | [Edit](#) | [Duplicate](#) | [Used In](#) | [Reorder](#)

[Remove From Test](#)

Question 29

Primary 4 Science » Primary 4 Science (Term 4)

2 pts

Booklet B

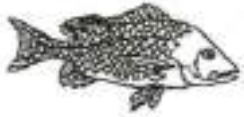
This section is designed for extended answers that parent/ teacher will have to assign and guide child to attempt after the test has been completed.

Grading: This question type is not graded on this system and will not affect the final score as it was designed in such a way that it requires manual assistance

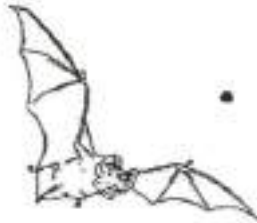
Match the following animals to the correct groups

Clue

Match



fish



mammal

Question Type: Matching
Grade style: Full points if all answers are correct
Shuffle Mode: Shuffle Matches Only
Date Added: Fri 15th Jan 2021
Last Modified: N/A
QID#: 25,893,201

[Answers](#) | [Edit](#) | [Duplicate](#) | [Used In](#) | [Reorder](#)

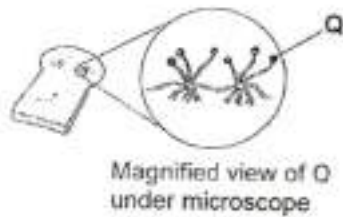
[Remove From Test](#)

Question 30

Primary 4 Science » Primary 4 Science (Term 4)

1 pt

(b) The diagram below shows two living things, Q and R.



Put a tick (✓) in the correct box to show the group each living thing belongs to.

Fungi:

A) Q

B) R

Question Type: Multiple Choice
Randomize Answers: No
Date Added: Fri 15th Jan 2021
Last Modified: N/A
QID#: 25,893,213

[Answers](#) | [Edit](#) | [Duplicate](#) | [Used In](#) | [Reorder](#)

[Remove From Test](#)

Question 31

Primary 4 Science » Primary 4 Science (Term 4)

1 pt

Bacteria:___

- A) Q
B) R
✓ C) None

Question Type: Multiple Choice
Randomize Answers: No
Date Added: Fri 15th Jan 2021
Last Modified: N/A
QID#: 25,893,219

[Answers](#) | [Edit](#) | [Duplicate](#) | [Used In](#) | [Reorder](#)

[Remove From Test](#)**Question 32**

Primary 4 Science » Primary 4 Science (Term 4)

1 pt

Plant:_____

- A) Q
✓ B) R
C) none

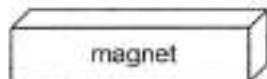
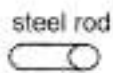
Question Type: Multiple Choice
Randomize Answers: No
Date Added: Fri 15th Jan 2021
Last Modified: N/A
QID#: 25,893,225

[Answers](#) | [Edit](#) | [Duplicate](#) | [Used In](#) | [Reorder](#)

[Remove From Test](#)**Question 33**

Primary 4 Science » Primary 4 Science (Term 4)

1 pt



(a) Susan places a magnet near a steel rod. The steel rod moves towards the magnet.

The magnet exerts a _____ on the steel rod. [1]

Accepted answers:

- ✓ magnetic

Question Type: Free Text
Date Added: Fri 15th Jan 2021
Last Modified: N/A
QID#: 25,893,233

Correctly answered feedback

The magnet exerts a magnetic force on the steel rod.

[Answers](#) | [Edit](#) | [Duplicate](#) | [Used In](#) | [Reorder](#)

[Remove From Test](#)

Question 34

Primary 4 Science » Primary 4 Science (Term 4)

1 pt

Susan's observation shows that steel is a ____ material

- A) stron
 B) non-magnetic
 ✓ C) magnetic

Question Type: Multiple Choice
Randomize Answers: No
Date Added: Fri 15th Jan 2021
Last Modified: N/A
QID#: 25,893,239

[Answers](#) | [Edit](#) | [Duplicate](#) | [Used In](#) | [Reorder](#)

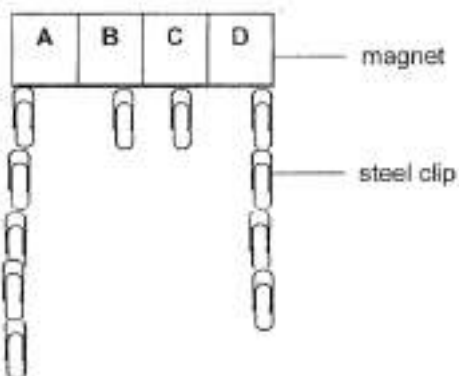
[Remove From Test](#)

Question 35

Primary 4 Science » Primary 4 Science (Term 4)

0 pts

(c) Susan placed the magnet above a tray containing some steel clips. The diagram below shows her observation.



Why did Parts A and D attract more steel clips than Parts B and C? [1]

Question Type: Essay
Date Added: Fri 15th Jan 2021
Last Modified: N/A
QID#: 25,893,300

Correctly answered feedback

Parts A and D attract more steel clips than parts B and C because magnets are strongest at its poles

Incorrectly answered feedback

Parts A and D attract more steel clips than parts B and C because magnets are strongest at its poles

[Answers](#) | [Edit](#) | [Duplicate](#) | [Used In](#) | [Reorder](#)

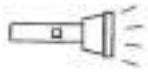
[Remove From Test](#)

Question 36

Primary 4 Science » Primary 4 Science (Term 4)

1 pt

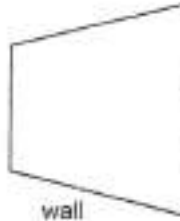
Alice shines a light on a wooden object and a shadow is formed on the smooth wall.



torch



wooden object



wall

(a) A shadow is formed when light is _____ by an object. [1]

Accepted answers:

✓ blocked

Question Type: Free Text
Date Added: Fri 15th Jan 2021
Last Modified: N/A
QID#: 25,893,309

[Answers](#) | [Edit](#) | [Duplicate](#) | [Used In](#) | [Reorder](#)

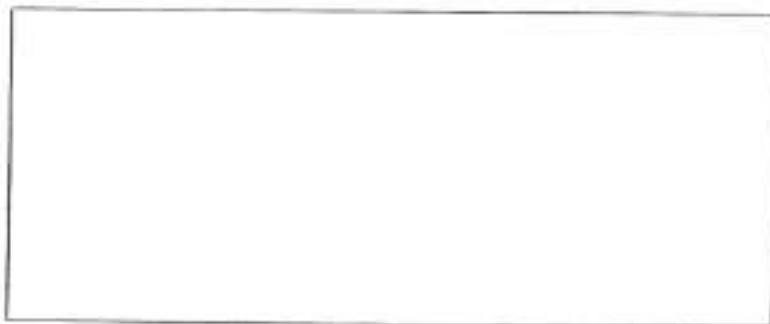
[Remove From Test](#)

Question 37

Primary 4 Science » Primary 4 Science (Term 4)

0 pts

(b) Draw the shadow of the wooden object that is formed on the wall in the box below. [1]



Please type "done" to proceed to the next question

Question Type: Essay
Date Added: Fri 15th Jan 2021
Last Modified: N/A
QID#: 25,893,319

Correctly answered feedback**Incorrectly answered feedback**

[Answers](#) | [Edit](#) | [Duplicate](#) | [Used In](#) | [Reorder](#)

[Remove From Test](#)

Question 38

Primary 4 Science » Primary 4 Science (Term 4)

0 pts

(c) Andy is doing his homework in his room.



Explain why Andy is able to see his worksheet on the table.

[1]

Question Type: Essay
Date Added: Fri 15th Jan 2021
Last Modified: N/A
QID#: 25,893,379

Correctly answered feedback

Andy is able to see his worksheet as the worksheet reflects light from the ceiling light into his eyes

Incorrectly answered feedback

Andy is able to see his worksheet as the worksheet reflects light from the ceiling light into his eyes

[Answers](#) | [Edit](#) | [Duplicate](#) | [Used In](#) | [Reorder](#)

[Remove From Test](#)

Question 39

Primary 4 Science » Primary 4 Science (Term 4)

1 pt

When heat is supplied to the water, its temperature _____

A) solid

- B) gas
- ✓ C) increases
- D) decreases
- E) remain unchanged

Question Type: Multiple Choice
Randomize Answers: No
Date Added: Fri 15th Jan 2021
Last Modified: N/A
QID#: 25,893,389

[Answers](#) | [Edit](#) | [Duplicate](#) | [Used In](#) | [Reorder](#)

[Remove From Test](#)

Question 40

Primary 4 Science » Primary 4 Science (Term 4)

1 pt

The beaker of water is put into a freezer. After some time, the water will change its state to become

- _____
- ✓ A) solid
 - B) gas
 - C) increases
 - D) decreases
 - E) remain unchanged

Question Type: Multiple Choice
Randomize Answers: No
Date Added: Fri 15th Jan 2021
Last Modified: N/A
QID#: 25,893,399

[Answers](#) | [Edit](#) | [Duplicate](#) | [Used In](#) | [Reorder](#)

[Remove From Test](#)

Question 41

Primary 4 Science » Primary 4 Science (Term 4)

1 pt

When the temperature of the water in the beaker decreases, the water has _____ heat

- A) gained
- ✓ B) lost

Question Type: Multiple Choice
Randomize Answers: No
Date Added: Fri 15th Jan 2021
Last Modified: N/A
QID#: 25,893,408

[Answers](#) | [Edit](#) | [Duplicate](#) | [Used In](#) | [Reorder](#)

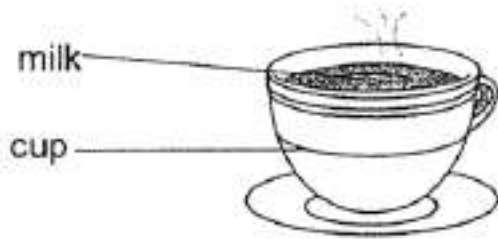
[Remove From Test](#)

Question 42

Primary 4 Science » Primary 4 Science (Term 4)

1 pt

The picture below shows a cup of milk.



Circle the correct states for the following things.

Cup: _____

- ✓ A) solid
- B) liquid
- C) gas

Question Type: Multiple Choice
Randomize Answers: No
Date Added: Fri 15th Jan 2021
Last Modified: N/A
QID#: 25,893,412

[Answers](#) | [Edit](#) | [Duplicate](#) | [Used In](#) | [Reorder](#)

[Remove From Test](#)

Question 43

Primary 4 Science » Primary 4 Science (Term 4)

1 pt

Milk: _____

- A) solid
- ✓ B) liquid
- C) gas

Question Type: Multiple Choice
Randomize Answers: No
Date Added: Fri 15th Jan 2021
Last Modified: N/A
QID#: 25,893,417

[Answers](#) | [Edit](#) | [Duplicate](#) | [Used In](#) | [Reorder](#)

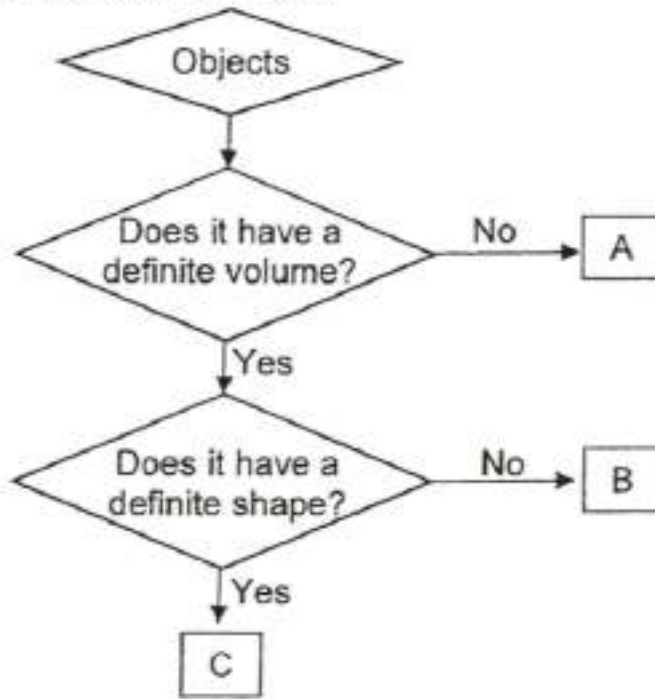
[Remove From Test](#)

Question 44

Primary 4 Science » Primary 4 Science (Term 4)

1 pt

(c) Study the flowchart below.



What states of water would A and C represent?
Circle the correct answers.

A: _____

- A) water
B) ice
✓ C) water vapour

Question Type: Multiple Choice
Randomize Answers: No
Date Added: Fri 15th Jan 2021
Last Modified: N/A
QID#: 25,893,478

[Answers](#) | [Edit](#) | [Duplicate](#) | [Used In](#) | [Reorder](#)

[Remove From Test](#)

Question 45

Primary 4 Science » Primary 4 Science (Term 4)

1 pt

C: _____

- A) water
✓ B) ice
C) water vapour

Question Type: Multiple Choice
Randomize Answers: No
Date Added: Fri 15th Jan 2021

Last Modified: N/A
 QID#: 25,893,482

[Answers](#) | [Edit](#) | [Duplicate](#) | [Used In](#) | [Reorder](#)

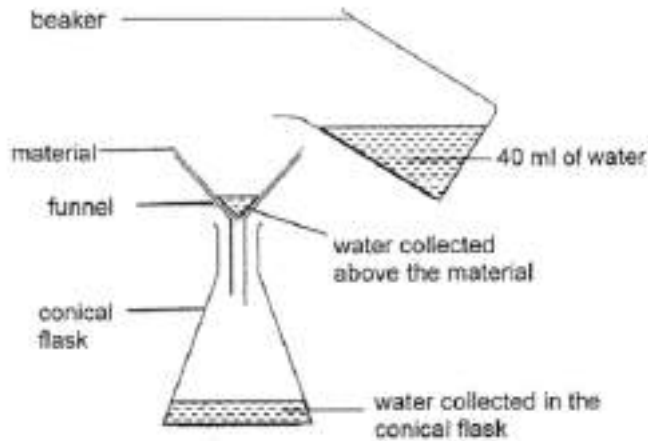
[Remove From Test](#)

Question 46

Primary 4 Science » Primary 4 Science (Term 4)

0 pts

Winnie had 3 different pieces of materials, P, Q and R, of similar size and thickness. She poured 40 ml of water onto each material as shown in the diagram below.



After 5 minutes, she recorded the amount of water collected in the conical flask and the amount of water collected above the material as shown in the table below.

Material	Amount of water collected in the conical flask (ml)	Amount of water collected above the material (ml)
P	40	0
Q	6	0
R	0	40

Based on the information above, answer the following questions:

Which material, P, Q or R, is most suitable to be made into a bath towel?
 Give a reason for your answer.

[1]

Question Type: Essay
 Date Added: Fri 15th Jan 2021
 Last Modified: N/A
 QID#: 25,893,536

Correctly answered feedback

Material Q because material Q absorbed the most amount of water

Incorrectly answered feedback

Material Q because material Q absorbed the most amount of water

[Answers](#) | [Edit](#) | [Duplicate](#) | [Used In](#) | [Reorder](#)

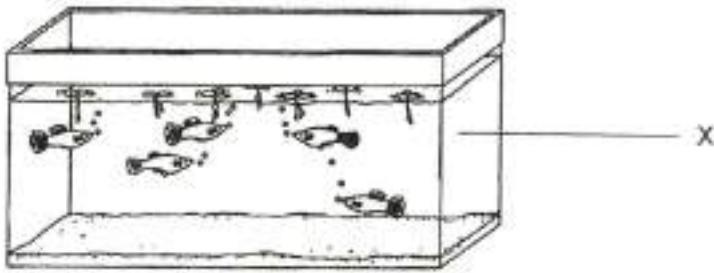
[Remove From Test](#)

Question 47

Primary 4 Science » Primary 4 Science (Term 4)

0 pts

The diagram below shows Part X of a fish tank that is made from one of the materials, P, Q or R.



Based on the information in the table, which material, P, Q or R, is most likely used to make part X? Give a reason for your answer. [1]

Question Type: Essay
Date Added: Fri 15th Jan 2021
Last Modified: N/A
QID#: 25,893,547

Correctly answered feedback

Material R. It is waterproof so the water will not leak out of the tank

Incorrectly answered feedback

Material R. It is waterproof so the water will not leak out of the tank

[Answers](#) | [Edit](#) | [Duplicate](#) | [Used In](#) | [Reorder](#)

[Remove From Test](#)

Question 48

Primary 4 Science » Primary 4 Science (Term 4)

0 pts

Besides the property mentioned in (b), state two other properties that the material used to make Part X of the aquarium must have

Question Type: Essay
Date Added: Fri 15th Jan 2021
Last Modified: N/A
QID#: 25,893,552

Correctly answered feedback

The aquarium must be transparent and strong

Incorrectly answered feedback

The aquarium must be transparent and strong

[Answers](#) | [Edit](#) | [Duplicate](#) | [Used In](#) | [Reorder](#)

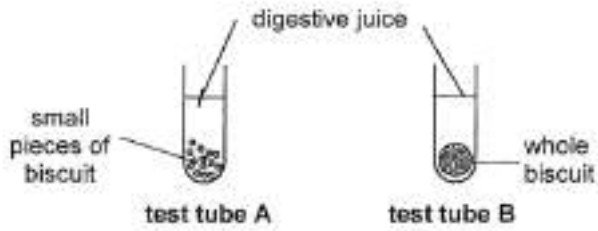
[Remove From Test](#)

Question 49

Primary 4 Science » Primary 4 Science (Term 4)

0 pts

Jordan wanted to find out if the surface area of food affects the rate of digestion. He cut one biscuit into many small pieces and placed them in test tube A. He then placed a whole biscuit in test tube B and added some digestive juice to each test tube as shown in the diagram below.



(a) State a variable that must be kept constant in order for Jordan to conduct a fair test. [1]

Question Type: Essay
Date Added: Fri 15th Jan 2021
Last Modified: N/A
QID#: 25,893,555

Correctly answered feedback

The amount of digestive juice

Incorrectly answered feedback

The amount of digestive juice

[Answers](#) | [Edit](#) | [Duplicate](#) | [Used In](#) | [Reorder](#)

[Remove From Test](#)

Question 50

Primary 4 Science » Primary 4 Science (Term 4)

0 pts

If Jordan has conducted a fair test, in which test tube A or B would the biscuit be broken down more quickly? Explain your answer.

Question Type: Essay
Date Added: Fri 15th Jan 2021
Last Modified: N/A
QID#: 25,893,569

Correctly answered feedback

Test tube A. The smaller piece of the biscuit have a greater surface area in contact with the digestive juices, so the digestion of biscuit take place quicker.

Incorrectly answered feedback

Test tube A. The smaller piece of the biscuit have a greater surface area in contact with the digestive juices, so the digestion of biscuit take place quicker.

[Answers](#) | [Edit](#) | [Duplicate](#) | [Used In](#) | [Reorder](#)

[Remove From Test](#)

Question 51

Primary 4 Science » Primary 4 Science (Term 4)

0 pts

Explain how chewing helps in the digestion of food after it enters the body.

Question Type: Essay
Date Added: Fri 15th Jan 2021
Last Modified: N/A
QID#: 25,893,593

Correctly answered feedback

During chewing, food is broken down into smaller pieces and more surface area of the food comes into contact with the digestive juices. As a result, food is broken down into simpler substances faster.

Incorrectly answered feedback

During chewing, food is broken down into smaller pieces and more surface area of the food comes into contact with the digestive juices. As a result, food is broken down into simpler substances faster.

[Answers](#) | [Edit](#) | [Duplicate](#) | [Used In](#) | [Reorder](#)

[Remove From Test](#)

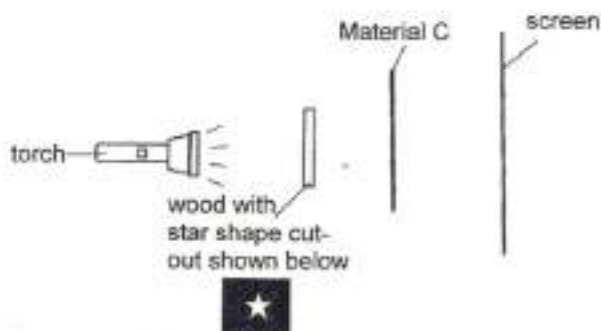
Question 52

Primary 4 Science » Primary 4 Science (Term 4)

1 pt

Jenny wanted to find out the amount of light which can pass through three different materials C, D and E.

She set up her experiment as shown in the diagram below using Material C and then repeated the experiment with Material D and E.



She also measured the brightness of any star-shaped image formed on the screen with a light sensor and recorded her results as shown below.

Material	C	D	E
Amount of light detected by the light sensor	40 units	0 units	35 units

Based on the results above, answer the following questions.

(a) Which one of the materials, C, D or E, allows the most light to pass through?
 [1]

- ✓ A) C
 B) D
 C) E

Question Type: Multiple Choice
Randomize Answers: No
Date Added: Fri 15th Jan 2021
Last Modified: N/A
QID#: 25,893,603

[Answers](#) | [Edit](#) | [Duplicate](#) | [Used In](#) | [Reorder](#)[Remove From Test](#)

Question 53

Primary 4 Science » Primary 4 Science (Term 4)

0 pts

Jenny wanted to wrap a birthday present for her mother. She did not want her mother to know what the person is until her birthday.

Which one of the materials, C, D or E should she use to wrap the birthday present? Give a reason for your choice

Question Type: Essay
Date Added: Fri 15th Jan 2021
Last Modified: N/A
QID#: 25,893,631

Correctly answered feedback

D. D is opaque and does not let any light pass through so Jenny's mother will not be able to see the present

Incorrectly answered feedback

D. D is opaque and does not let any light pass through so Jenny's mother will not be able to see the present

[Answers](#) | [Edit](#) | [Duplicate](#) | [Used In](#) | [Reorder](#)[Remove From Test](#)

Question 54

Primary 4 Science » Primary 4 Science (Term 4)

0 pts

How can Jenny make the shadow of the wood on the screen bigger without moving the screen?

Question Type: Essay
Date Added: Fri 15th Jan 2021
Last Modified: N/A
QID#: 25,893,639

Correctly answered feedback

Move the torch nearer to the wood

Incorrectly answered feedback

Move the torch nearer to the wood

[Answers](#) | [Edit](#) | [Duplicate](#) | [Used In](#) | [Reorder](#)[Remove From Test](#)

Question 55

Primary 4 Science » Primary 4 Science (Term 4)

0 pts

Ronnie wanted to find out which material can keep soup warm for a longer period of time.

He used two bowls of the same size, Bowl X and Bowl Y. Bowl X is made of plastic and Bowl Y is made of steel.

He poured the same amount of hot water into each bowl and left it on the table. Then he measured the temperature of the water in each bowl over 30 minutes.



Bowl X



Bowl Y

(a) Write X or Y in the table below to show the results for each bowl correctly. [1]

Bowl	Temperature (°C) at		
	0 min	15 min	30 min
	80	59	40
	80	63	56

Question Type: Essay
 Date Added: Fri 15th Jan 2021
 Last Modified: N/A
 QID#: 25,893,645

Correctly answered feedback

Bowl	Temperature (°C) at		
	0 min	15 min	30 min
Steel	80	59	40
Plastic	80	63	56

Incorrectly answered feedback

Bowl	Temperature (°C) at		
	0 min	15 min	30 min
Steel	80	59	40
Plastic	80	63	56

[Answers](#) | [Edit](#) | [Duplicate](#) | [Used In](#) | [Reorder](#)

[Remove From Test](#)

Question 56

Primary 4 Science » Primary 4 Science (Term 4)

0 pts

Explain your answer in (a)

Question Type: Essay
Date Added: Fri 15th Jan 2021
Last Modified: N/A
QID#: 25,893,653

Correctly answered feedback

Bowl Y is made of steel, a better conductor of heat than plastic, so the water will lose heat faster to the surrounding in the steel bowl and have a lower temperature.

Incorrectly answered feedback

Bowl Y is made of steel, a better conductor of heat than plastic, so the water will lose heat faster to the surrounding in the steel bowl and have a lower temperature.

[Answers](#) | [Edit](#) | [Duplicate](#) | [Used In](#) | [Reorder](#)

[Remove From Test](#)

Question 57

Primary 4 Science » Primary 4 Science (Term 4)

0 pts

After 60 minutes, he measured the temperature of the water in both bowls again and found that temperature of water in both bowls is 28°C. Explain why the water in both bowls remained at 28°C.

Question Type: Essay
Date Added: Fri 15th Jan 2021
Last Modified: N/A
QID#: 25,893,665

Correctly answered feedback

28°C is the room temperature

Incorrectly answered feedback

28°C is the room temperature

[Answers](#) | [Edit](#) | [Duplicate](#) | [Used In](#) | [Reorder](#)

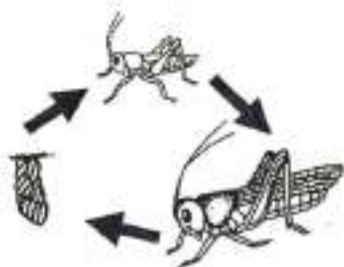
[Remove From Test](#)

Question 58

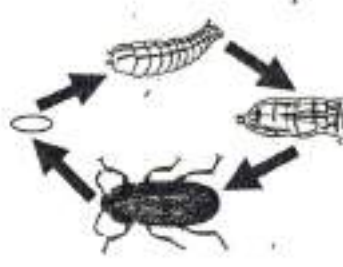
Primary 4 Science » Primary 4 Science (Term 4)

0 pts

The diagram below shows the life cycle of Animal S and Animal T.



Life cycle of Animal S



Life cycle of Animal T

(a) Based on the diagram above, state **two** differences between the life cycles of Animal S and Animal T. (Do not name the stages present) [2]

Question Type: Essay
Date Added: Fri 15th Jan 2021
Last Modified: N/A
QID#: 25,893,671

Correctly answered feedback

The young of S resembles the adult but the young of T does not resemble the adult

Incorrectly answered feedback

The young of S resembles the adult but the young of T does not resemble the adult

[Answers](#) | [Edit](#) | [Duplicate](#) | [Used In](#) | [Reorder](#)

[Remove From Test](#)

Question 59

Primary 4 Science » Primary 4 Science (Term 4)

1 pt

Name an insect that does through a similar life cycle as Animal S and Animal T respectively

Animal S: _____

Accepted answers:

✓ cockroach

Question Type: Free Text
Date Added: Fri 15th Jan 2021
Last Modified: N/A
QID#: 25,893,679

[Answers](#) | [Edit](#) | [Duplicate](#) | [Used In](#) | [Reorder](#)

[Remove From Test](#)

Question 60

Primary 4 Science » Primary 4 Science (Term 4)

1 pt

Animal T: _____

Accepted answers:

✓ butterfly

Question Type: Free Text
Date Added: Fri 15th Jan 2021
Last Modified: N/A
QID#: 25,893,681

[Answers](#) | [Edit](#) | [Duplicate](#) | [Used In](#) | [Reorder](#)

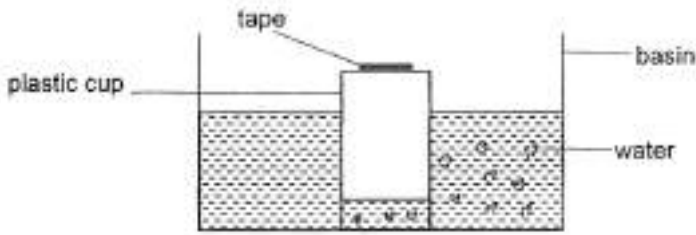
[Remove From Test](#)

Question 61

Primary 4 Science » Primary 4 Science (Term 4)

0 pts

Ling Ling made a hole at the base of a plastic cup and then she used a piece of tape to cover the hole. When she pushed the inverted cup into the basin of water, only a small amount of water entered the cup as shown in the diagram below.



(a) Explain why only a small amount of water can enter the cup.

[1]

Question Type: Essay
Date Added: Fri 15th Jan 2021
Last Modified: N/A
QID#: 25,893,692

Correctly answered feedback

Air occupies space inside the cup and cannot escape. So only a small amount of water can enter as air can be compressed

Incorrectly answered feedback

Air occupies space inside the cup and cannot escape. So only a small amount of water can enter as air can be compressed

[Answers](#) | [Edit](#) | [Duplicate](#) | [Used In](#) | [Reorder](#)

[Remove From Test](#)

Question 62

Primary 4 Science » Primary 4 Science (Term 4)

0 pts

What will happen to the water level in the cup if she removes the tap from the cup? Explain your answer

Question Type: Essay
Date Added: Fri 15th Jan 2021
Last Modified: N/A
QID#: 25,893,698

Correctly answered feedback

It will rise. There will be spaces for air to escape and water to take over the space previously occupied by the air

Incorrectly answered feedback

It will rise. There will be spaces for air to escape and water to take over the space previously occupied by the air

[Answers](#) | [Edit](#) | [Duplicate](#) | [Used In](#) | [Reorder](#)

[Remove From Test](#)

Question 63

Primary 4 Science » Primary 4 Science (Term 4)

0 pts

A container was completely filled with marbles as shown in the diagram below.



Some water was poured into the container to fill up the spaces between the marbles.

What property of water allows the water to fill up the air spaces between the marbles? [1]

Question Type: Essay
 Date Added: Fri 15th Jan 2021
 Last Modified: N/A
 QID#: 25,893,705

Correctly answered feedback

Water does not have a definite shape

Incorrectly answered feedback

Water does not have a definite shape

[Answers](#) | [Edit](#) | [Duplicate](#) | [Used In](#) | [Reorder](#)

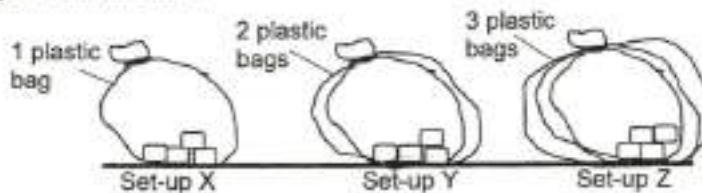
[Remove From Test](#)

Question 64

Primary 4 Science » Primary 4 Science (Term 4)

0 pts

Adam prepared three set-ups, X, Y and Z, using ice cubes of identical sizes. The ice cubes in X, Y and Z were wrapped with different number of plastic bags as shown below.



Adam recorded the time taken for all the ice cubes to turn into water below.

Set-up	Time taken for ice-cubes to turn into water completely (min)
X	30
Y	45
Z	60

(a) Identify the independent variable (variable changed) and dependent variable (variable measured) in the experiment. [2]

Independent variable (variable changed) :

Question Type: Essay
 Date Added: Fri 15th Jan 2021
 Last Modified: N/A
 QID#: 25,893,719

Correctly answered feedback

Independent variable: Amount of plastic bags wrapped around the ice cubes
 Dependent variable: Time taken for ice cube to turn into water completely

Incorrectly answered feedback

Independent variable: Amount of plastic bags wrapped around the ice cubes
 Dependent variable: Time taken for ice cube to turn into water completely

[Answers](#) | [Edit](#) | [Duplicate](#) | [Used In](#) | [Reorder](#)

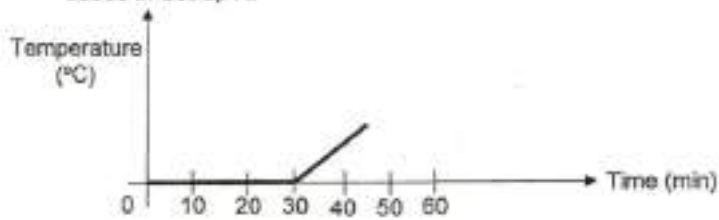
[Remove From Test](#)

Question 65

Primary 4 Science » Primary 4 Science (Term 4)

0 pts

(b) Adam drew the graph below to show the change in temperature of the ice cubes in Set-up X.



Why did the temperature of the ice cubes remain at 0°C during the first 30 minutes? [1]

Question Type: Essay
Date Added: Fri 15th Jan 2021
Last Modified: N/A
QID#: 25,893,724

Correctly answered feedback

The ice was melting

Incorrectly answered feedback

The ice was melting

[Answers](#) | [Edit](#) | [Duplicate](#) | [Used In](#) | [Reorder](#)

[Remove From Test](#)